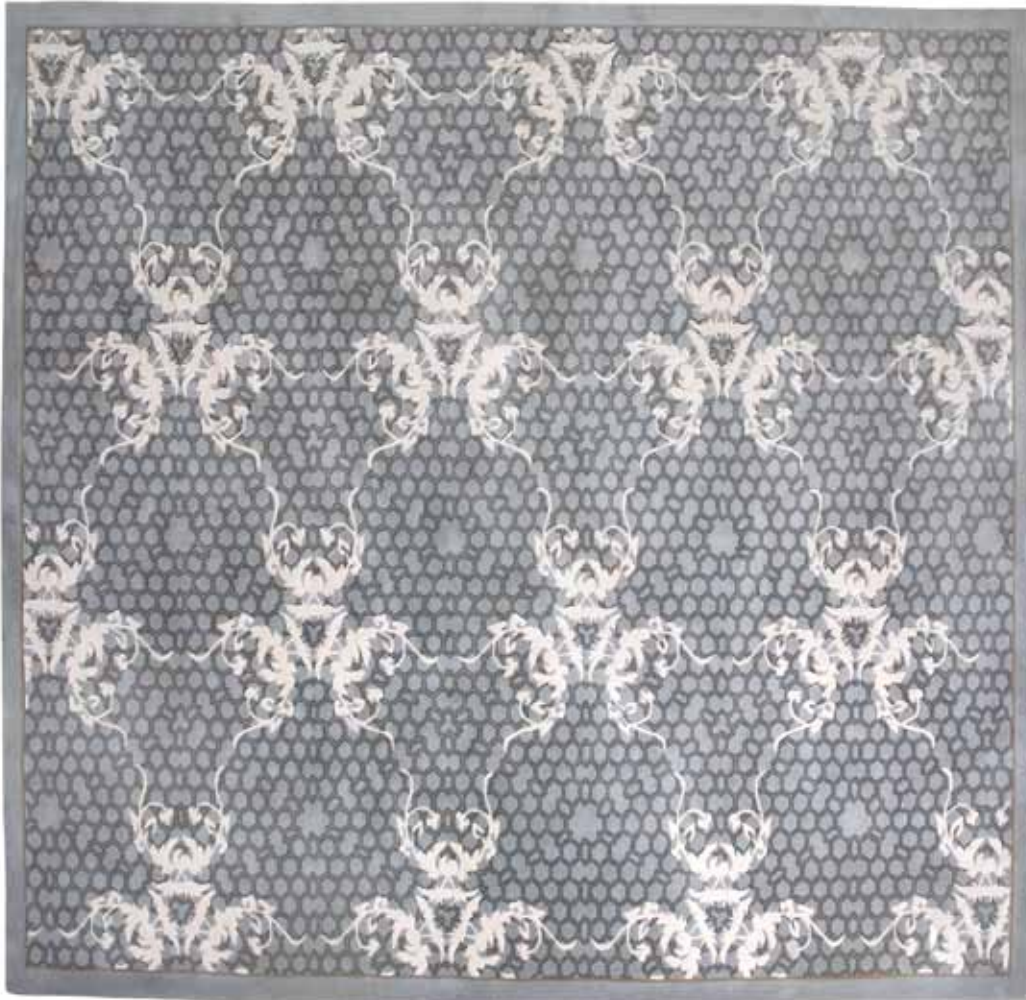


# LOTUS SILK



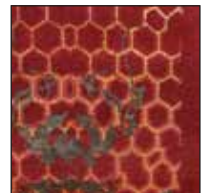
FINCH



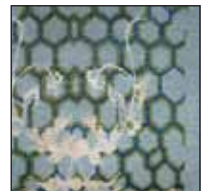
CORNFIELD



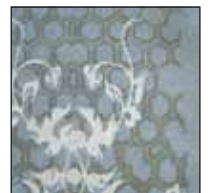
HONEY+LIME



CIDERMILL



BLUEGRASS



SWAN

## COLORWAY: SWAN



SIZES: 3'2"x10'2", 4'4"x6'4", 6'4"x8'10",  
9'2"x12', 8'6"x11'8"

\*colors may vary

\*available in several colors and other rug sizes

## MATERIALS:

Hand carved, hand spun, pot dyed, pure Tibetan wool and Chinese silk using Azo free swiss dyes.

Shown here in Swan colorway the exquisite Lotus Silk rugs are made in Nepal by experienced craftsmen. They are 100 knot, 5mm pile height, hand knotted Tibetan wool. Slight variations in color and design are normal. These rugs are fair labor certified by Goodweave. Our Rug Recycling Initiative applies to all dps rugs.



R - 4